

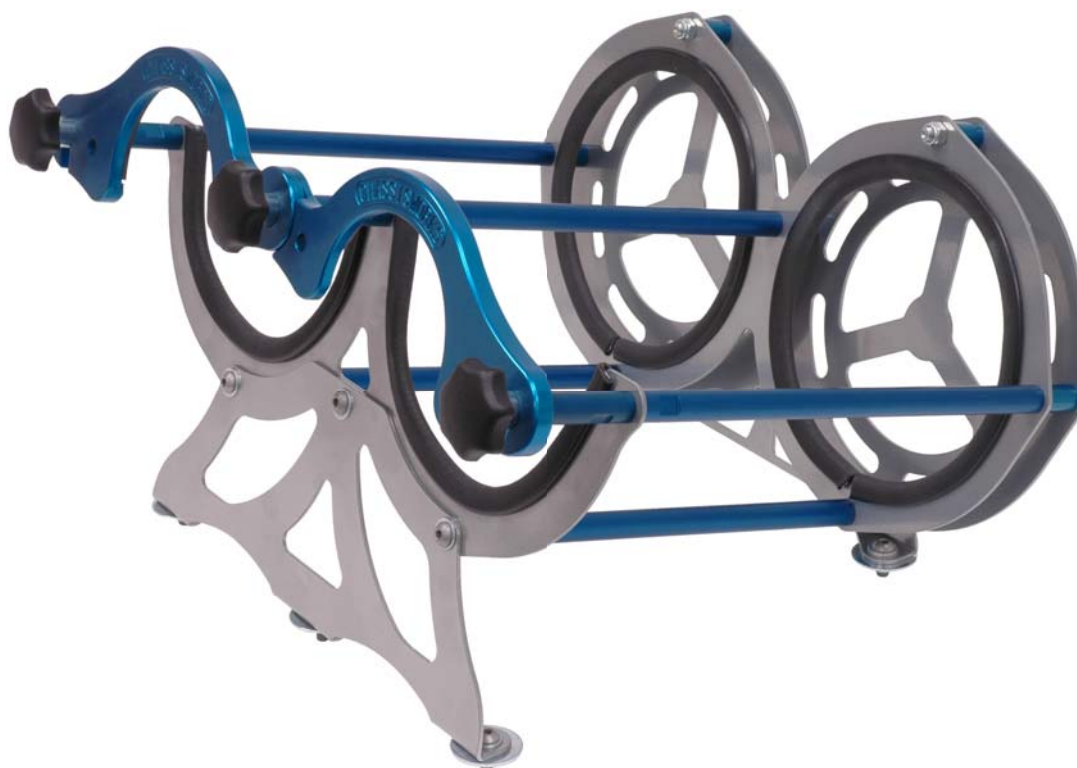
READ ALL INSTRUCTIONS COMPLETELY AND THOROUGHLY UNDERSTAND THEM BEFORE DOING ANYTHING.
CALL CHASSISWORKS TECH SUPPORT (916) 388-0288 IF YOU NEED ASSISTANCE.

INSTALLATION GUIDE

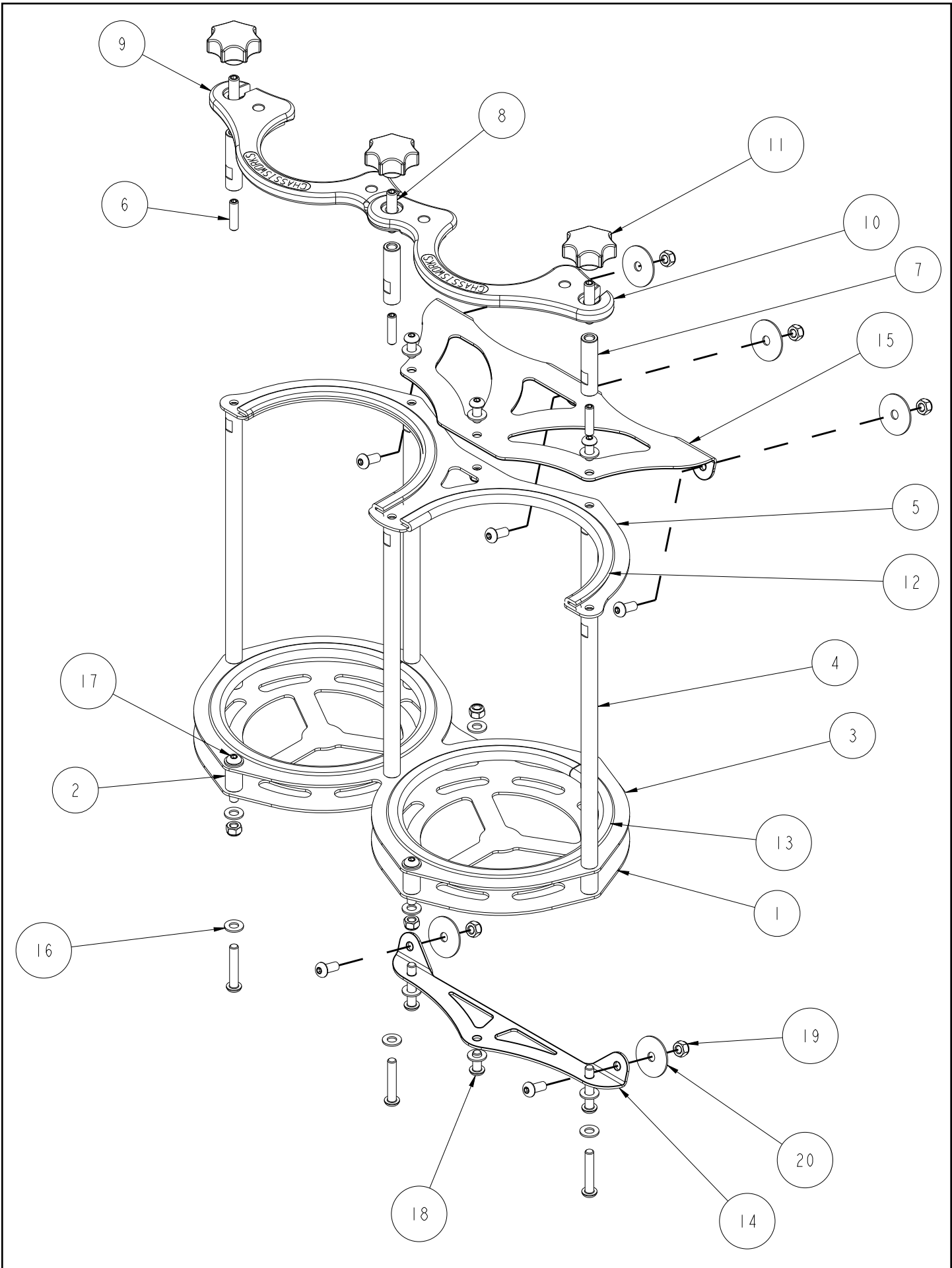


6426, 6430, 6434

**15-DEGREE DUAL 10 LB.
NITROUS BOTTLE RACK**

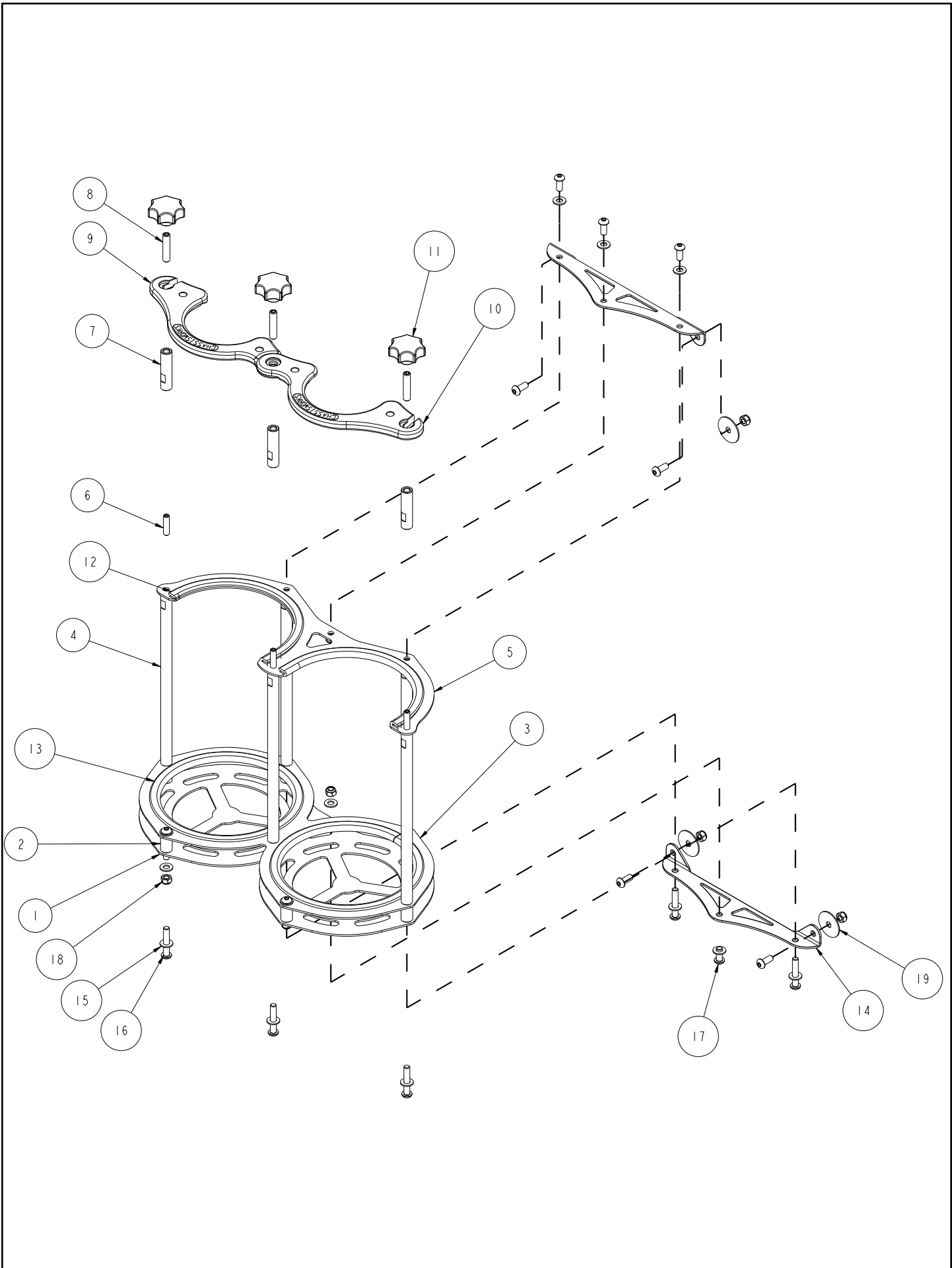


Description: Dual 10-pound nitrous bottle rack mounts at 15-degree angle. Includes rack, brackets, and mounting hardware.



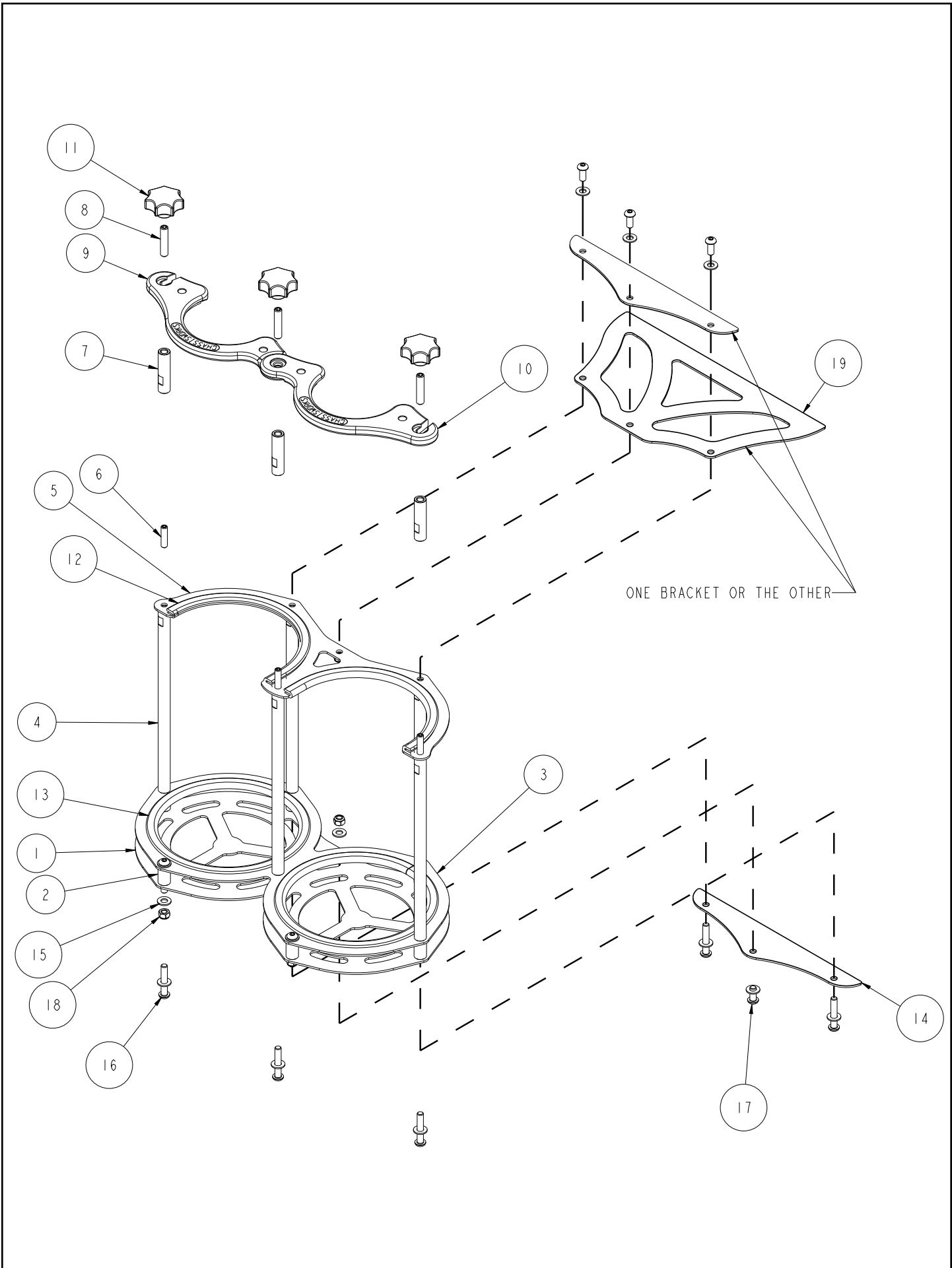
ITEM	QTY	PART NO.	DESCRIPTION
1	1	2177	LAY-DOWN DUAL BASE NITROUS RACK
2	7	1323	SPACER, NITROUS BOTTLE RACK
3	1	2179	BASE BOTTLE RING DUAL NITROUS RACK
4	5	1324	SIDE RAIL, 10 LB NITROUS BOTTLE RACK
5	1	2181	UPPER BOTTLE CRADLE DUAL NITROUS RACK
6	3	3106-31CK1.25B	HEX SOCKET SET SCREW, CUP POINT 5/16-18 x 1 1/4, BLACK OXIDE
7	3	1326	SIDE RAIL EXTENTION NITROUS BOTTLE RACK
8	3	3106-38CK1.75B	HEX SOCKET SET SCREW, CUP POINT 3/8-16 x 1 3/4, BLACK OXIDE
9	1	3801	DUAL BOTTLE CLAMP LEFT ASSEMBLY
10	1	3802	DUAL BOTTLE CLAMP RIGHT ASSEMBLY
11	3	3572	KNOB, 3/8-16 INTERNAL THREAD STEEL INSERT
12	2	3570-12.750	TRIM BOTTLE TRIM GUARD
13	2	3750-23_625	TRIM NITROUS RACK BOTTOM
14	1	230150	BOLT IN LAY-DOWN 15° LOWER MOUNT DUAL NITROUS RACK
15	1	230157	BOLT IN LAY-DOWN 15° UPPER MOUNT DUAL NITROUS RACK, 10#
16	15	3157-031S-C	WASHER, 5/16 SAE, ZINC PLATED, 11/32 ID x 7/8 OD x 1/16 THICK
17	7	3104-031C1.75C	BUTTON HEAD SOCKET CAP SCREW, 5/16-18 x 1 3/4, CLEAR ZINC
18	9	3104-031C0.75C	BUTTON HEAD SOCKET CAP SCREW, 5/16-18 x 3/4, CLEAR ZINC
19	9	3101-031-18C	LOCKNUT 5/16-18, GRADE 5, NYLON INSERT, CLEAR ZINC
20	5	3157-031F-C	FENDER WASHER, 5/16 x 1 1/2, ZINC PLATED

DESCRIPTION		10 POUND NITROUS BOTTLE, 15° DOUBLE RACK	
<i>Chris Alston's</i> CHASSISWORKS INC. 8661 YOUNGER CREEK DRIVE SACRAMENTO, CA 95828 (916) 388-0288 FAX 388-0295		PART NO.	6426
		4/22/11	DWG: 916426



ITEM	QTY	PART NO.	DESCRIPTION
1	1	2177	LAY-DOWN DUAL BASE NITROUS RACK
2	7	1323	SPACER, NITROUS BOTTLE RACK
3	1	2179	BASE BOTTLE RING DUAL NITROUS RACK
4	5	1324	SIDE RAIL, 10 LB NITROUS BOTTLE RACK
5	1	2181	UPPER BOTTLE CRADLE DUAL NITROUS RACK
6	3	3106-31CK1.25B	HEX SOCKET SET SCREW, CUP POINT 5/16-18 x 1 1/4, BLACK OXIDE
7	3	1326	SIDE RAIL EXTENTION NITROUS BOTTLE RACK
8	3	3106-38CK1.75B	HEX SOCKET SET SCREW, CUP POINT 3/8-16 x 1 3/4, BLACK OXIDE
9	1	3801	DUAL BOTTLE CLAMP LEFT ASSEMBLY
10	1	3802	DUAL BOTTLE CLAMP RIGHT ASSEMBLY
11	3	3572	KNOB, 3/8-16 INTERNAL THREAD STEEL INSERT
12	2	3570-12.750	TRIM BOTTLE TRIM GUARD
13	2	3750-23_625	TRIM NITROUS RACK BOTTOM
14	2	230153	BOLT IN LAY-DOWN FLAT LOWER/UPPER MOUNT DUAL NITROUS RACK
15	15	3157-03IS-C	WASHER, 5/16 SAE, ZINC PLATED, 11/32 ID x 7/8 OD x 1/16 THICK
16	7	3104-03IC1.75C	BUTTON HEAD SOCKET CAP SCREW, 5/16-18 x 1 3/4, CLEAR ZINC
17	8	3104-03IC0.75C	BUTTON HEAD SOCKET CAP SCREW, 5/16-18 x 3/4, CLEAR ZINC
18	7	3101-031-18C	LOCKNUT 5/16-18, GRADE 5, NYLON INSERT, CLEAR ZINC
19	3	3157-03IF-C	FENDER WASHER, 5/16 x 1 1/2, ZINC PLATED

DESCRIPTION		10 POUND NITROUS BOTTLE LAY-DOWN DOUBLE RACK	
<i>Chris Alston's</i> CHASSISWORKS INC. 8661 YOUNGER CREEK DRIVE SACRAMENTO, CA 95828 (916) 388-0288 FAX 388-0295		PART NO.	6430
		4/22/11	DWG: 916430



ITEM	QTY	PART NO.	DESCRIPTION
1	1	2177	LAY-DOWN DUAL BASE NITROUS RACK
2	7	1323	SPACER, NITROUS BOTTLE RACK
3	1	2179	BASE BOTTLE RING DUAL NITROUS RACK
4	5	1324	SIDE RAIL, 10 LB NITROUS BOTTLE RACK
5	1	2181	UPPER BOTTLE CRADLE DUAL NITROUS RACK
6	3	3106-31CK1.25B	HEX SOCKET SET SCREW, CUP POINT 5/16-18 x 1 1/4, BLACK OXIDE
7	3	1326	SIDE RAIL EXTENTION NITROUS BOTTLE RACK
8	3	3106-38CK1.75B	HEX SOCKET SET SCREW, CUP POINT 3/8-16 x 1 3/4, BLACK OXIDE
9	1	3801	DUAL BOTTLE CLAMP LEFT ASSEMBLY
10	1	3802	DUAL BOTTLE CLAMP RIGHT ASSEMBLY
11	3	3572	KNOB, 3/8-16 INTERNAL THREAD STEEL INSERT
12	2	3570-12.750	TRIM BOTTLE TRIM GUARD
13	2	3750-23_625	TRIM NITROUS RACK BOTTOM
14	2	2183	WELD IN LAY-DOWN LOWER MOUNT DUAL NITROUS RACK
15	15	3157-03IS-C	WASHER, 5/16 SAE, ZINC PLATED, 11/32 ID x 7/8 OD x 1/16 THICK
16	7	3104-031C1.75C	BUTTON HEAD SOCKET CAP SCREW, 5/16-18 x 1 3/4, CLEAR ZINC
17	4	3104-031C0.75C	BUTTON HEAD SOCKET CAP SCREW, 5/16-18 x 3/4, CLEAR ZINC
18	4	3101-031-18C	LOCKNUT 5/16-18, GRADE 5, NYLON INSERT, CLEAR ZINC
19	1	230155	WELD IN LAY-DOWN UPPER MOUNT DUAL NITROUS RACK

DESCRIPTION		10 POUND NITROUS BOTTLE WELD-IN SINGLE RACK	
<i>Chris Alston's</i> CHASSISWORKS INC. 8661 YOUNGER CREEK DRIVE SACRAMENTO, CA 95828 (916) 388-0288 FAX 388-0295		PART NO.	6434
		4/22/11	DWG: 916434

PARTS LIST

6426 - 15-DEGREE DUAL 10 LB. NITROUS BOTTLE RACK

Qty	Part Number	Description
1	300-1001	10 lb. dual nitrous bottle rack
1	300-1005	15 degree bracket set, dual nitrous bottle rack

300-1001- DUAL NITROUS BOTTLE RACK

Qty	Part Number	Description
5	1324	Side rail 1" OD x 11.160" long
1	2177	Lay down dual base
1	2179	Base bottle ring
1	2181	Upper bottle cradle
6.25'	3570	Edge guard
1	3801	Dual bottle clamp left assembly
1	3802	Dual bottle clamp right assembly

90300-1001 - HARDWARE BAG

Qty	Part Number	Description
7	1323	Spacer nitrous bottle rack
3	1326	Side rail extensions
9	3101-031-18C	Locknut 5/16-18 nylon insert
9	3104-031C0.75C	Button head 5/16-18 x 3/4"
7	3104-031C1.75C	Button head 5/16-18 x 1-3/4"
3	3106-31CK1.25B	Setscrew 5/16-18 x 1-1/4"
3	3106-38CK1.75B	Setscrew 3/8-16 x 1-3/4"
15	3157-031S-C	Flat washer 5/16" SAE
5	3157-031F-C	Fender washer 5/16" x 1-1/2"
3	3572	Knob star grip

300-1005 - 15-DEGREE BRACKET SET (FOR 6426)

1	230150	Bolt-in 15° lower dual bottle mount
1	230157	Bolt-in 15° upper dual bottle mount

300-1009 - LAYDOWN BRACKET SET (FOR 6430)

2	230153	Bolt-in lay-down flat dual bottle mounts
---	--------	--

300-1011 - WELD-IN BRACKET SET (FOR 6434)

2	2183	Weld-in lower dual bottle mount
1	2187	Weld-in upper dual bottle mount

INSTRUCTIONS

NOTE: Use red Loctite on all screws and both ends of setscrew studs where they screw into the aluminum side rails. Only put Loctite on one end of the 3/8" setscrew where it attaches to the side rail extension. The other end must be free for the knob to rotate.

Assembling the Rack

1. Align the base plate and lower mount attachment holes as shown in the drawing. All the holes in the lower mount should line up with holes in the base plate. Attach the base plate to the lower mount using 5/16-18 x 3/4 button head screws with washers through the outside holes from the side of the lower mount. Secure using 5/16-18 nuts with washers on the base plate side.
2. Assemble the base plate and bottle ring plate using the 1" spacers and 5/16-18 x 1-3/4 button head screws as shown in the drawing. The bottle ring should be on the opposite side of the base plate from the lower mount. The screws go in from the bottom through the base plate, through the spacer and then the bottle ring. One screw receives a 5/16-18 nut with a 5/16 washer. The other three screws receive the side rail posts. Install the side rails with the flats up as shown in the drawing. Do not tighten.
3. Install the 5/16-18 x 1-1/4 setscrews into the top of the outside side rails as shown. Thread the screw completely in until it bottoms out in the hole and tighten.
4. Place the upper cradle onto the side rails over the setscrews as shown in the drawing.
5. Align the upper mount as shown in the drawing to the upper cradle mounting holes. Attach the upper mount using 5/16-18 x 3/4 button head screws with washers as shown. The screws will thread into the rear posts where required otherwise use 5/16-18 nuts with a washer.
6. Thread the side rail extensions onto the setscrews as shown in the drawing with the flats down. (Note that one end of the extension is threaded 5/16-18 the other is 3/8-16.)
7. Tighten all hardware securely. Use a 1/2" open-end wrench to hold the side rails while tightening.
8. Thread the two 3/8-16 x 1-3/4 setscrews into the side rail extensions until they bottom out. Tighten the setscrews.
9. To install the edge guard, it will have to be cut to length. For the lower holes, you will need a nominal length of 23 5/8" plus 1/8" for fitting. After installing the edge guard, trim until it fits tight with little to no gap. The nominal length for the top is 11-3/4". Use sheet metal sheers or diagonal cutters to cut the edge guard.
10. Install the edge guard in the lower bottle ring by starting with one end where you would like the seam. Tap the edge guard on using a mallet until seated against the edge. Work your way around until the edge guard ends meet. If the end is a little too long, make sure the edge guard is fully seated all the way around. If it's still too long, mark the amount to trim where it overlaps. Pull the end out and trim a little less than where you marked. Repeat if necessary.
11. Install the edge guard in the upper cradle in the same manner. It's best to start with the middle of the edge guard and tap it on at the center back of the cradle first. Then work your way each direction. This will help to have it centered.
12. Install the bottle clamp over the 3/8 setscrews as shown and secure with the locking knobs.

Mounting the Assembly

13. Set the assembly on the floor of your car with the bottle clamp forward and mark the four base plate mounting holes on the floor.
14. Drill the mounting holes in the floor using an 11/32" drill bit.
15. Mount the rack using 5/16-18 x 3/4 button head cap screws through the base plate and floor. Slide the 5/16 fender washers onto the bolts from the back followed by the lock nuts. Tighten the mounting screws securely.
16. To use, loosen both the locking knobs and swing the bottle clamp open to install or remove the bottle. You do not need to over tighten the lock knobs since they go into the counter bores on the bottle clamp.

Notes:

WARRANTY NOTICE:

There are NO WARRANTIES, either expressed or implied. Neither the seller nor manufacturer will be liable for any loss, damage or injury, direct or indirect, arising from the use or inability to determine the appropriate use of any products. Before any attempt at installation, all drawings and/or instruction sheets should be completely reviewed to determine the suitability of the product for its intended use. In this connection, the user assumes all responsibility and risk. We reserve the right to change specification without notice. Further, Chris Alston's Chassisworks, Inc., makes **NO GUARANTEE** in reference to any specific class legality of any component. **ALL PRODUCTS ARE INTENDED FOR RACING AND OFF-ROAD USE AND MAY NOT BE LEGALLY USED ON THE HIGHWAY.** The products offered for sale are true race-car components and, in all cases, require some fabrication skill. **NO PRODUCT OR SERVICE IS DESIGNED OR INTENDED TO PREVENT INJURY OR DEATH.**

Chris Alston's Chassisworks
8661 Younger Creek Drive
Sacramento, CA 95828
Phone: 916-388-0288
Technical Support:tech@cachassisworks.com

