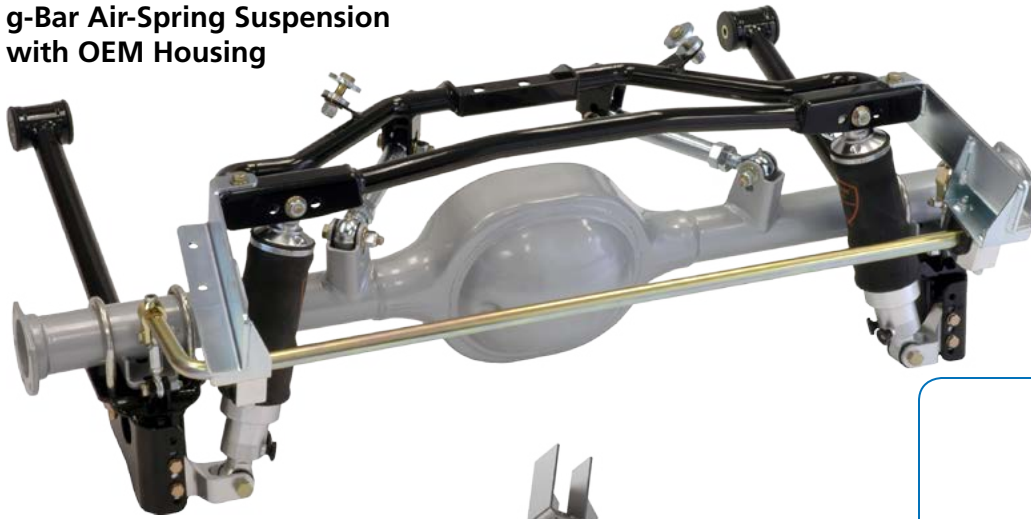




[CLICK for More Info Online](#)

g-Link Rear Suspension Conversions for Classic Mustangs and Cougars

g-Bar Air-Spring Suspension with OEM Housing



Mini-Tub g-Link Coil-Over with FAB9 Housing



g-Link Rear Suspension Conversions

The g-Link series of retro-fit canted-4-bar suspensions from Total Control Products directly replace the OEM leaf springs and shocks for dramatically improved handling and performance. Supported with multiple styles of control arms, mounting brackets, shock absorbers and rear end housings, g-Link systems are configurable to suit an incredibly broad range of street and high-performance applications. Laser scanned vehicle data is used during design and engineering for reliably accurate fit. As a result, components are positioned and mounted using easily accessed factory chassis features, saving installation time and expense. The recently added Mini-Tub g-Link configuration further broadens the performance application range to include modern pro-touring builds with substantially larger tire and wheel sizes. Either style system requires only a minimal amount of welding for installation of the control arm mounts, frame brackets, and frame rail segments, if applicable (Mini-Tub g-Link only). Currently available applications include '64-'73 Mustangs and '67-'70 Cougars.

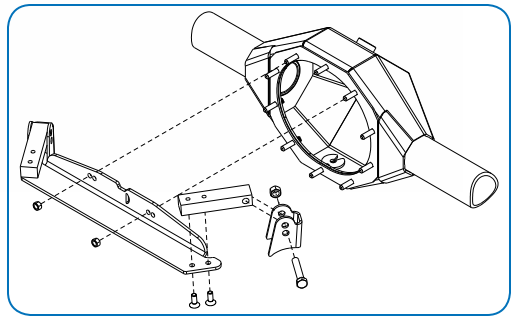
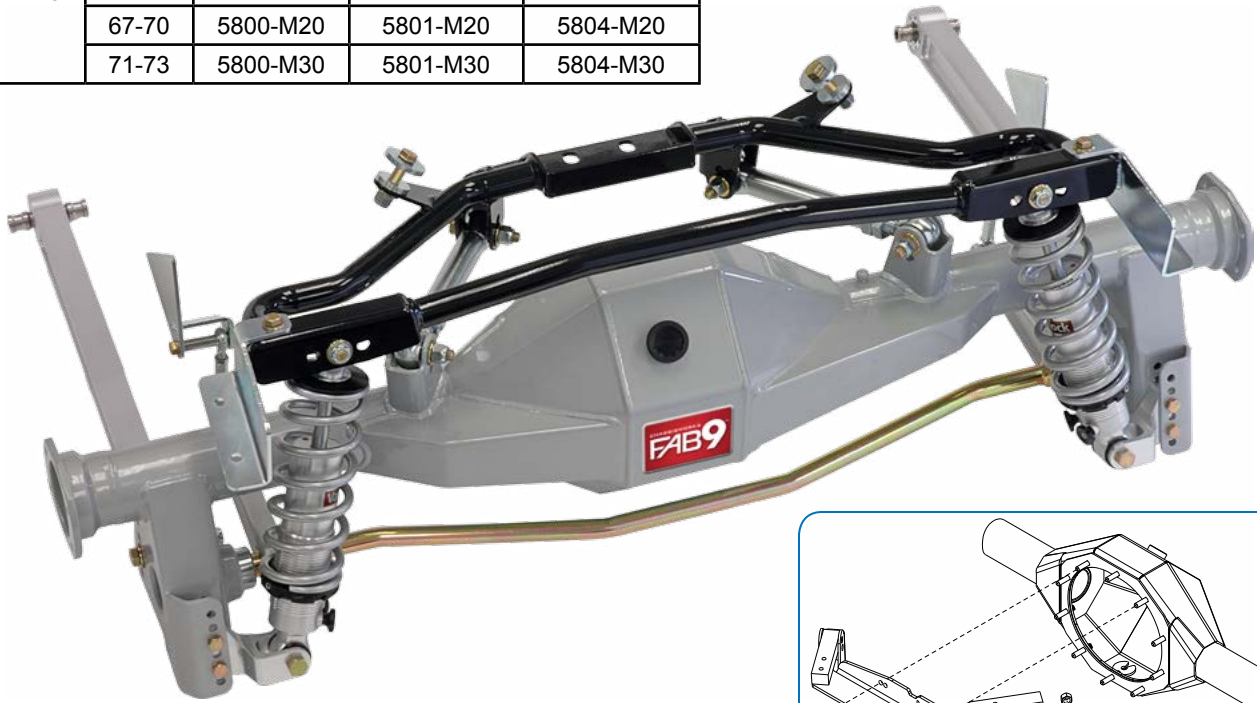
g-Link Systems	
Cougar	67-70
Mustang	64-66
	67-70
	71-73

Mini-Tub g-Link	
Mustang	64-70

g-Link Coil-Over Suspensions

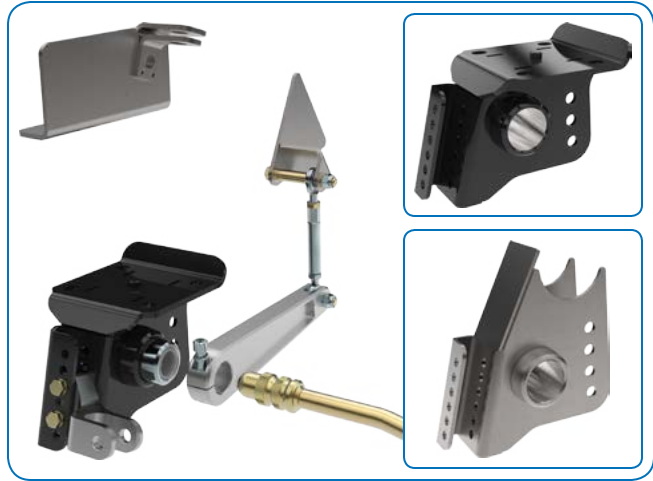
Model	Year	g-Bar (poly)	g-Link (pivot)	Billet g-Link
Cougar	67-70	5800-C10	5801-C10	5804-C10
Mustang	64-66	5800-M10	5801-M10	5804-M10
	67-70	5800-M20	5801-M20	5804-M20
	71-73	5800-M30	5801-M30	5804-M30

Use OEM or FAB9 Housing



6716 - Upper Arm Bracket Weld-Fixture
for Ford 9", 8" or FAB9 rear end housing
(Returnable for partial deposit refund.)

Splined Billet-Arm (Axle Mount)



Sliding-Link Adjustable (Chassis Mount)



5806-M10	Splined Billet-Arm Anti-Roll Bar
	3/4"-diameter tubular bar with splined ball-ends
	Billet-aluminum arm with pinch bolt and clevis
	Pivot-socket threaded adjuster for axle bracket
	Adjustable end links with spherical-bearing ends
	Weld-on chassis end-link clevis
	Fixed bar rate
Applications	C10, M10, M20 and M30

5812-M10	Sliding-Link Adjustable Anti-Roll Bar
	5/8"-diameter solid bar with adjustment detents
	Integrated arm with sliding clevis; 3-positions
	Billet-aluminum urethane-bushing mount
	Adjustable end links with spherical-bearing ends
	Axle end-link clevis located on lower arm bracket
	Adjustable bar rate
Applications	C10, M10, M20 and M30

g-Bar Coil-Over Suspension - (Poly-Bushing)



5800-C10	Upper Arms	Billet-steel poly-eye arms - OPTIONS: single-adjustable, double-adjustable
5800-M10	Lower Arms	Tubular steel poly-eye arms (1/2" added clearance)
5800-M20	Shocks	Billet-aluminum VariShock coil-overs - OPTIONS: factory-valved, single-adjustable, double-adjustable
5800-M30	Springs	2-1/2" ID, 12" length - OPTIONS: M10 (150, 175, 200); C10 / M20 / M30 (175, 200, 250)

g-Link Coil-Over Suspension - (Pivot-Ball)



5804-C10	Upper Arms	Billet-steel pivot-ball arms - OPTIONS: single-adjustable, double-adjustable
5804-M10	Lower Arms	Tubular steel pivot-ball arms - OPTIONS: centered (1/2" added clearance), offset (1" added clearance)
5804-M20	Shocks	Billet-aluminum VariShock coil-overs - OPTIONS: single-, double- or 4-way adjustable; COM-8 or pivot-ball
5804-M30	Springs	2-1/2" ID, 12" length - OPTIONS: M10 (150, 175, 200); C10 / M20 / M30 (175, 200, 250)

Billet g-Link Coil-Over Suspension - (Pivot-Ball)

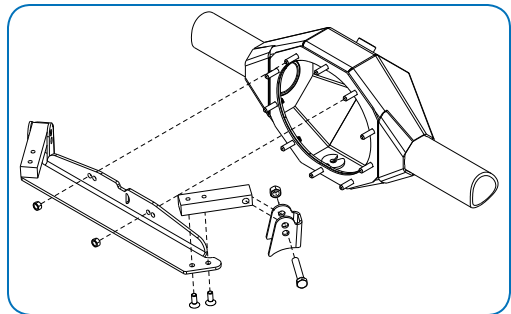
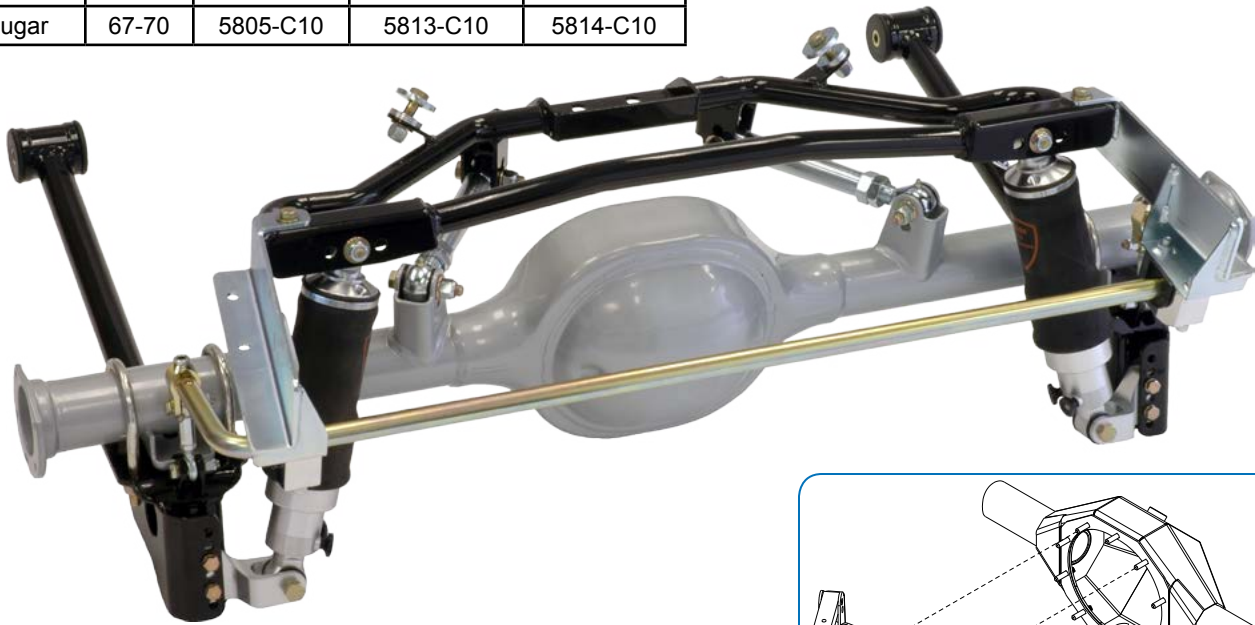


5813-C10	Upper Arms	Billet-steel pivot-ball arms - OPTIONS: single-adjustable, double-adjustable
5813-M10	Lower Arms	Billet-aluminum pivot-ball arms - OPTIONS: centered (1/2" added clearance), offset (1" added clearance)
5813-M20	Shocks	Billet-aluminum VariShock coil-overs - OPTIONS: single-, double- or 4-way adjustable; COM-8 or pivot-ball
5813-M30	Springs	2-1/2" ID, 12" length - OPTIONS: M10 (150, 175, 200); C10 / M20 / M30 (175, 200, 250)

g-Link Air-Spring Suspensions

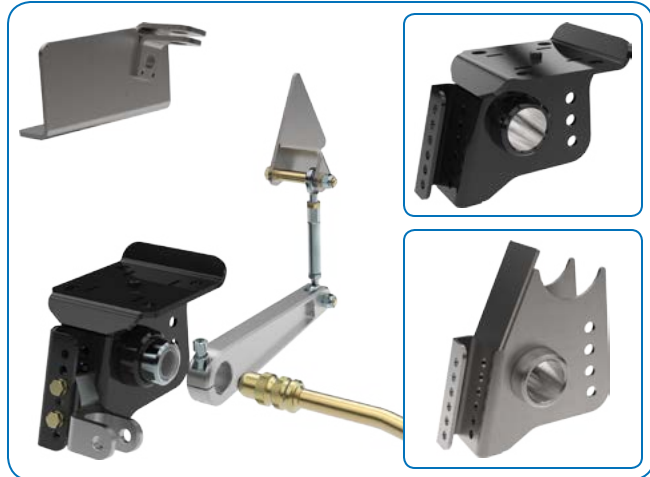
Model	Year	g-Bar (poly)	g-Link (pivot)	Billet g-Link
Mustang	64-66	5805-M10	5813-M10	5814-M10
	67-70	5805-M20	5813-M20	5814-M20
	71-73	5805-M30	5813-M30	5814-M30
Cougar	67-70	5805-C10	5813-C10	5814-C10

Use OEM or FAB9 Housing



6716 - Upper Arm Bracket Weld-Fixture
for Ford 9", 8" or FAB9 rear end housing
(Returnable for partial deposit refund.)

Splined Billet-Arm (Axle Mount)



5806-M10	Splined Billet-Arm Anti-Roll Bar
	3/4"-diameter tubular bar with splined ball-ends
	Billet-aluminum arm with pinch bolt and clevis
	Pivot-socket threaded adjuster for axle bracket
	Adjustable end links with spherical-bearing ends
	Weld-on chassis end-link clevis
	Fixed bar rate
Applications	C10, M10, M20 and M30

Sliding-Link Adjustable (Chassis Mount)



5812-M10	Sliding-Link Adjustable Anti-Roll Bar
	5/8"-diameter solid bar with adjustment detents
	Integrated arm with sliding clevis; 3-positions
	Billet-aluminum urethane-bushing mount
	Adjustable end links with spherical-bearing ends
	Axle end-link clevis located on lower arm bracket
	Adjustable bar rate
Applications	C10, M10, M20 and M30

g-Bar Air-Spring Suspension - (Poly-Bushing)



5801-C10	Upper Arms	Billet-steel poly-eye arms - OPTIONS: single-adjustable, double-adjustable
5801-M10	Lower Arms	Tubular steel poly-eye arms (1/2" added clearance)
5801-M20	Shocks	Billet-aluminum VariShock air-spring shocks - OPTIONS: single-adjustable, double-adjustable
5801-M30		

g-Link Air-Spring Suspension - (Pivot-Ball)



5805-C10	Upper Arms	Billet-steel pivot-ball arms - OPTIONS: single-adjustable, double-adjustable
5805-M10	Lower Arms	Tubular steel pivot-ball arms - OPTIONS: centered (1/2" added clearance), offset (1" added clearance)
5805-M20	Shocks	Billet-aluminum VariShock air-spring shocks - OPTIONS: single-adjustable, double-adjustable
5805-M30		

Billet g-Link Air-Spring Suspension - (Pivot-Ball)



5814-C10	Upper Arms	Billet-steel pivot-ball arms - OPTIONS: single-adjustable, double-adjustable
5814-M10	Lower Arms	Billet-aluminum pivot-ball arms - OPTIONS: centered (1/2" added clearance), offset (1" added clearance)
5814-M20	Shocks	Billet-aluminum VariShock air-spring shocks - OPTIONS: single-adjustable, double-adjustable
5814-M30		

Mini-Tub g-Link Suspension for 1964-70 Mustang

5854-M10	64-70 Mustang Mini-Tub g-Link Suspension		
HOUSING OPTIONS	Weld-on axle brackets		
	Upper-arm bracket weld fixture (6732)		
	FAB9 rear end housing		
	Anti-roll bar, axle-bracket mounted		
SHOCK OPTIONS	SPRING	ADJUSTMENT	MOUNT
	12" Coil	Single (overall stiffness)	COM-8
	12" Coil	Double (bump/rebound)	COM-8
	10" Coil	4-way (bump/rebound, high/low speed)	COM-8
	12" Coil	Double (bump/rebound)	Pivot-ball
	Air-spring	Single (overall stiffness)	Poly
	Air-spring	Double (bump/rebound)	Poly
CHASSIS OPTIONS	Offset frame rail kit		
	Mini wheel tubs		
CONTROL ARM OPTIONS	Adjustable-length tubular steel		
	Fixed-length billet aluminum		
5821-M10	Splined Billet-Arm Anti-Roll Bar		

- Moves front mount inside of frame rail
- 2-3/4" additional clearance per side
- Stronger offset frame rail
- Lower axle brackets 39" outside width



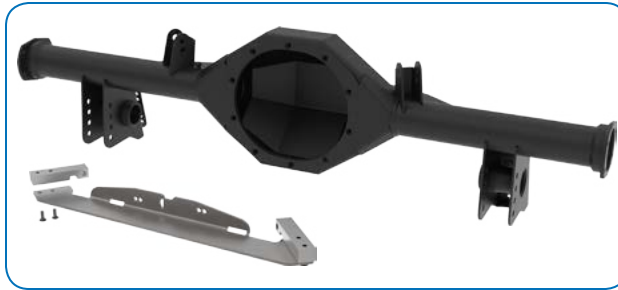
NOTE Requires narrowed gas tank due to relocated frame rails.



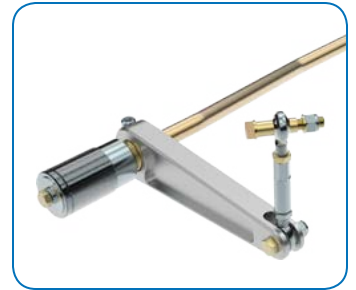
HOUSING OPTIONS



Weld-On Brackets for OE Housing



Weld-Fixture for OE Housing or Factory-Welded FAB9



Splined-End Anti-Roll Bar

SHOCK OPTIONS



Coil-Over Shocks



Coil-Over Shocks



Air-Spring Shocks

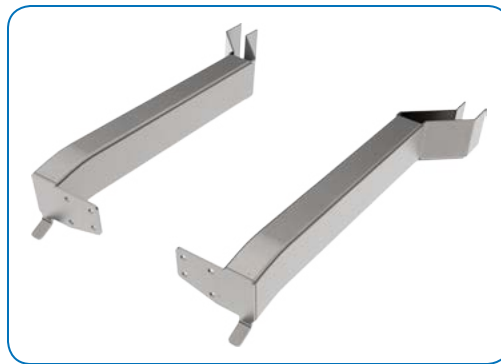


VariSprings

CHASSIS OPTIONS



Mini Wheel Tub Set



Offset Frame Rail Kit



Assembly with Frame Rail Kit (top view)

CONTROL ARM OPTIONS



Double-Adjustable Upper



Tubular-Steel or Billet-Aluminum Lower





OPTION - Pro-Touring Floater
 Unit-bearing 35-spline axle
 system available with
 5-lug or center-lock hubs



Housing Mounted Anti-Roll Bar FAB9 Housings

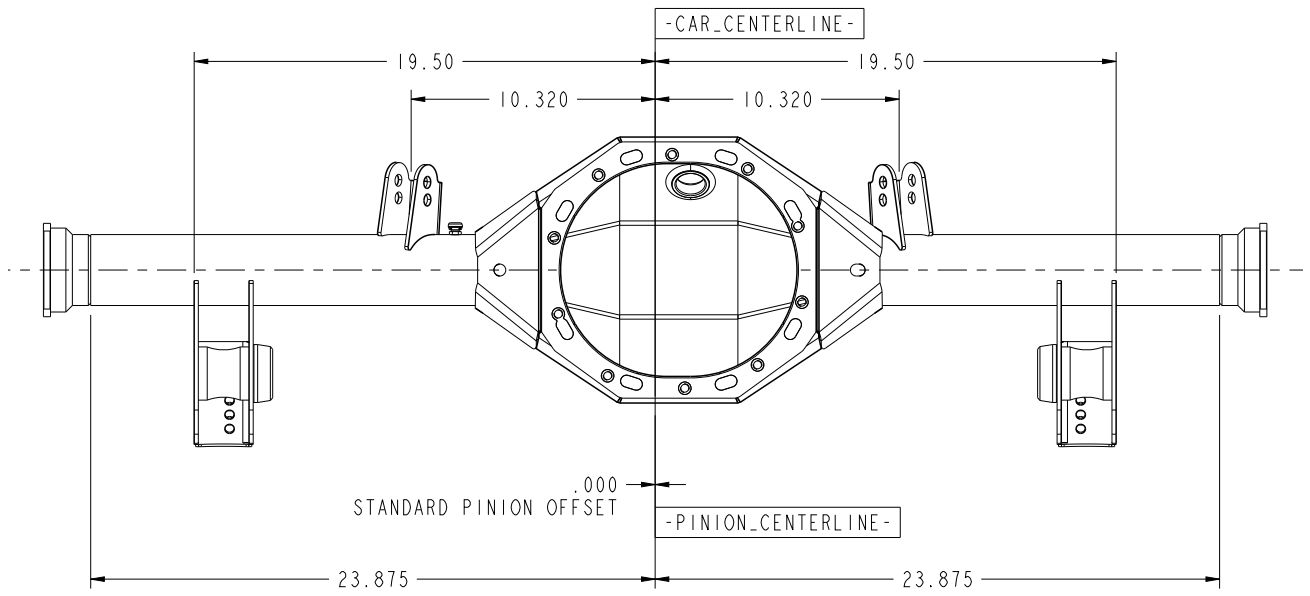
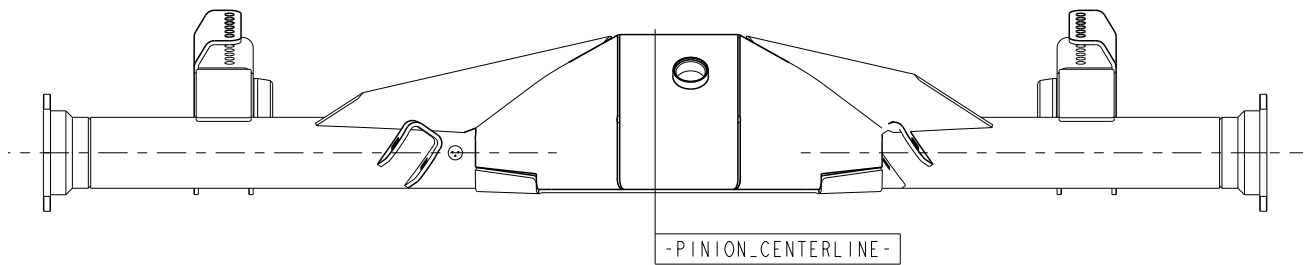
Model	Year	Mild Steel	4130	Housing End	Pinion Offset	Stock Width	Minimum Width
Mustang	64-66	84M10-601	84M10-611	LBFS	0"	57-1/4"	55-1/4"
	67-70	84M20-601	84M20-611	LBFS	0"	59-1/4"	57-1/4"
	71-73	84M30-601	84M30-611	LBFS	1/2"	60-3/4"	56-3/4"
Cougar	67-70	84M20-601	84M20-611	LBFS	0"	59-1/4"	57-1/4"
Notes:	LBFS = Late Big-Ford Sealed; 2-1/2" axle flange offset						
	Stock and Minimum Widths measured wheel-to-wheel, using 1/4" thick brake hats						

Chassis Mounted Anti-Roll Bar FAB9 Housings

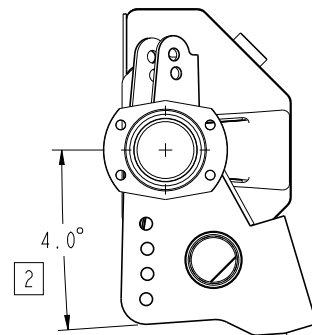
Model	Year	Mild Steel	4130	Housing End	Pinion Offset	Stock Width	Minimum Width
Mustang	64-66	84M10-701	84M10-711	LBFS	0"	57-1/4"	55-1/4"
	67-70	84M20-701	84M20-711	LBFS	0"	59-1/4"	57-1/4"
	71-73	84M30-701	84M30-711	LBFS	1/2"	60-3/4"	56-3/4"
Cougar	67-70	84M20-701	84M20-711	LBFS	0"	59-1/4"	57-1/4"
Notes:	LBFS = Late Big-Ford Sealed; 2-1/2" axle flange offset						
	Stock and Minimum Widths measured wheel-to-wheel using 1/4" thick brake hats						

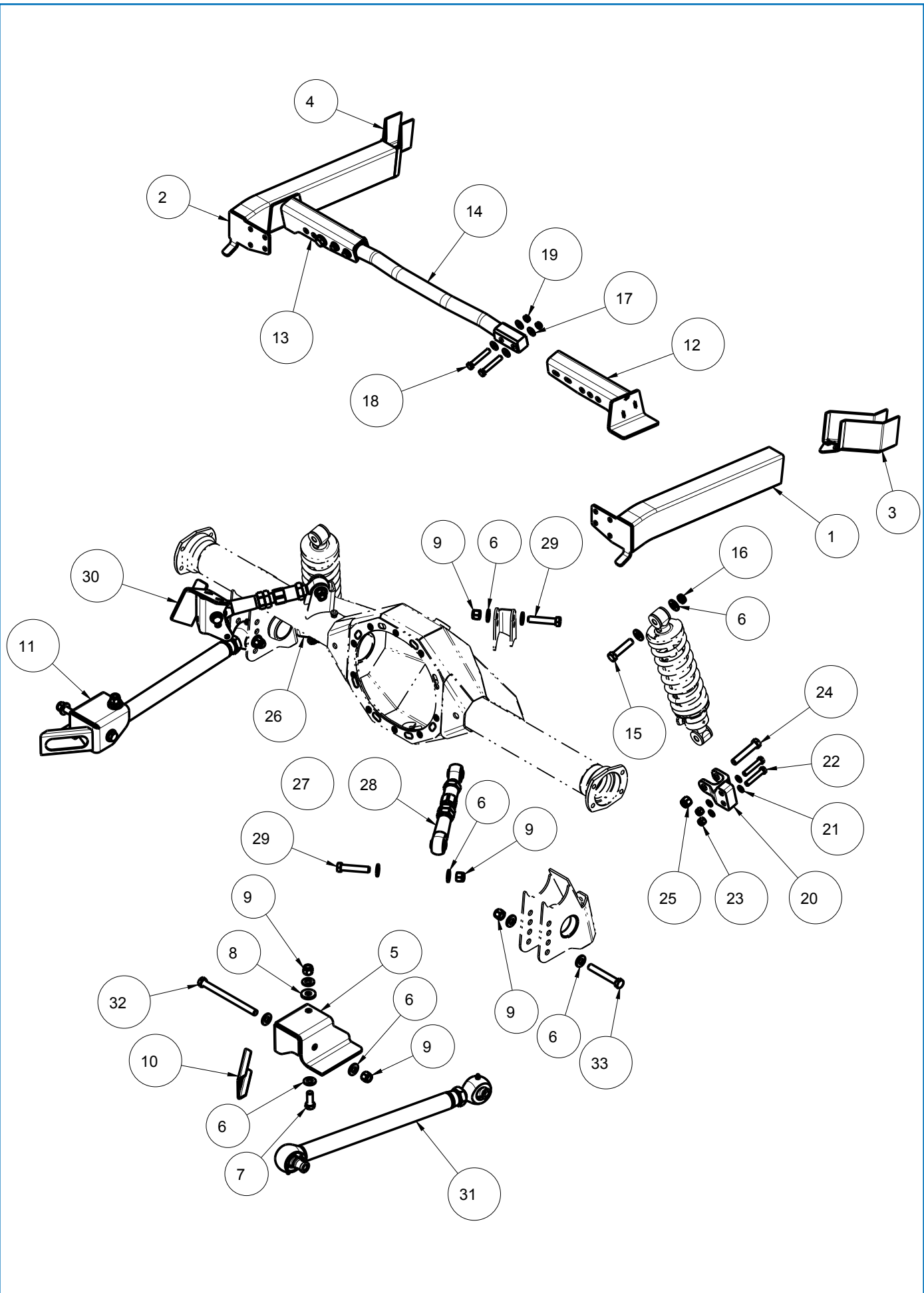
Mini-Tub FAB9 Housings, Chassis Mounted ARB

Model	Year	Mild Steel	4130	Housing End	Pinion Offset	Maximum Width	Minimum Width
Mustang	64-70	84M10-801	84M10-811	LBFS	0"	57-1/4"	55-1/4"
		84M10-80B	84M10-81B	PTF	0"	57-1/4"	55-1/4"
Notes:	LBFS = Late Big-Ford Sealed - 2-1/2" axle flange offset						
	PTF - Pro-Touring Floater Axle - 1-3/4" hub flange offset						
	Maximum and Minimum Widths measured wheel-to-wheel using 1/4" thick brake hats						



- NOTES:
1. USE CHASSISWORKS FIXTURE 6732 TO INSTALL UPPER CONTROL ARM BRACKETS
 2. BOTTOM OF AXLE BRACKET IS ROTATED 4 DEGREES FROM HOUSING FACE





ITEM	QTY	PART NO.	DESCRIPTION
1	1	7902-057	FRAME RAIL ASSY, DRIVER, 64-70 MUSTANG, MINI-TUB
2	1	7902-060	FRAME RAIL ASSY, PASSENGER, 64-70 MUSTANG, MINI-TUB
3	1	7902-091	RAIL CAP WELDMENT, DRIVER, 64-70 MUSTANG, MINI-TUB
4	1	7902-095	RAIL CAP WELDMENT, PASSENGER, 64-70 MUSTANG, MINI-TUB
5	1	7902-069	BRACKET, LEAF SPRING, DRV, 64-70 MUSTANG, MINI-TUB
6	24	3120-050S-Y	FLAT WASHER, 1/2 SAE, HARDENED, YELLOW ZINC
7	2	3100-050C1.25Y	HEX BOLT, 1/2-13 x 1 1/4, GRADE 8, YELLOW ZINC
8	2	210136	WASHER, \varnothing 1 1/4 x \varnothing 1/2 x .180 THICK
9	10	3101-050-13C	LOCKNUT 1/2-13, GRADE 5, NYLON INSERT, CLEAR ZINC
10	2	7902-071	GUSSET, LEAF SPRING, 64-70 MUSTANG, MINI-TUB
11	1	7902-070	BRACKET, LEAF SPRING, PSGR, 64-70 MUSTANG, MINI-TUB
12	1	7902-086	FRAME BRACKET WELDMENT, AXLE ARB, DRV, 64-70 MUSTANG, MINI-TUB
13	1	7902-089	FRAME BRACKET, WELDMENT, AXLE ARB, PSGR, 64-70 MUSTANG, MINI-TUB
14	1	7902-103	CROSS TUBE WELDMENT, SHOCK MOUNT, G-BAR, 64-70 MUSTANG, MINI-TUB
15	2	3100-050F2.25Y	HEX BOLT, 1/2-20 x 2 1/4, GRADE 8, YELLOW ZINC
16	2	3117-050-20C	LOCKNUT, 1/2-20, GRADE 5, HALF HEIGHT, NYLON INSERT, CLEAR ZINC
17	8	3120-038S-Y	FLAT WASHER, 3/8 SAE, HARDENED, YELLOW ZINC
18	4	3100-038F2.25Y	HEX BOLT, 3/8-24 x 2 1/4, GRADE 8, YELLOW ZINC
19	4	3117-038-24C	LOCKNUT, 3/8-24, GRADE 5, HALF HEIGHT, NYLON INSERT, CLEAR ZINC
20	1	1477-D	G-BAR STRAIGHT SHOCK MOUNT, DRIVER, ADJUSTABLE, OFFSET
21	8	3109-038-S-2-Y	AIRCRAFT WASHER 3/8 x .062 THICK
22	4	3100-038F2.00Y	HEX BOLT, 3/8-24 x 2, GRADE 8, YELLOW ZINC
23	4	3101-038-24C	LOCKNUT, 3/8-24, GRADE 5, NYLON INSERT, CLEAR ZINC
24	2	3100-050F2.75Y	HEX BOLT, 1/2-20 x 2 3/4, GRADE 8, YELLOW ZINC
25	2	3101-050-20C	LOCKNUT, 1/2-20, GRADE 5, NYLON INSERT, CLEAR ZINC
26	1	1477-P	G-BAR STRAIGHT SHOCK MOUNT, PSGR, ADJUSTABLE, OFFSET
27	1	7902-079	ASSY, FRAME BRACKET, G-LINK, DRV, 64-70 MUSTANG, MINI-TUB
28	2	3818-09.00	G-LINK UPPER LINK ASSY, DA, BALL PIVOT, 9.00 CENTER LENGTH
29	4	3100-050C2.50Y	HEX BOLT, 1/2-13 x 2 1/2, GRADE 8, YELLOW ZINC
30	1	7902-083	ASSY, FRAME BRACKET, G-LINK, PSGR, 64-70 MUSTANG, MINI-TUB
31	2	3816-21.00-ADD	LOWER LINK ASSEMBLY, G-LINK, DRV, 3.085 OFFSET PIVOT BALL, 21 CENTER
32	2	3100-050C6.50Y	HEX BOLT, 1/2-13 x 6 1/2, GRADE 8, YELLOW ZINC
33	2	3100-050C3.50Y	HEX BOLT, 1/2-13 x 3 1/2, GRADE 8, YELLOW ZINC

DESCRIPTION		G-LINK, AXLE MOUNT ARB, 64-70 MUSTANG, MINI-TUB	
<i>Chris Alston's</i> CHASSISWORKS INC. 8661 YOUNGER CREEK DRIVE SACRAMENTO, CA 95828 (916) 388-0288 FAX 388-0295		PART NO.	5854-M10
		3/15/19	DWG: 915854-M10

NOTES:

